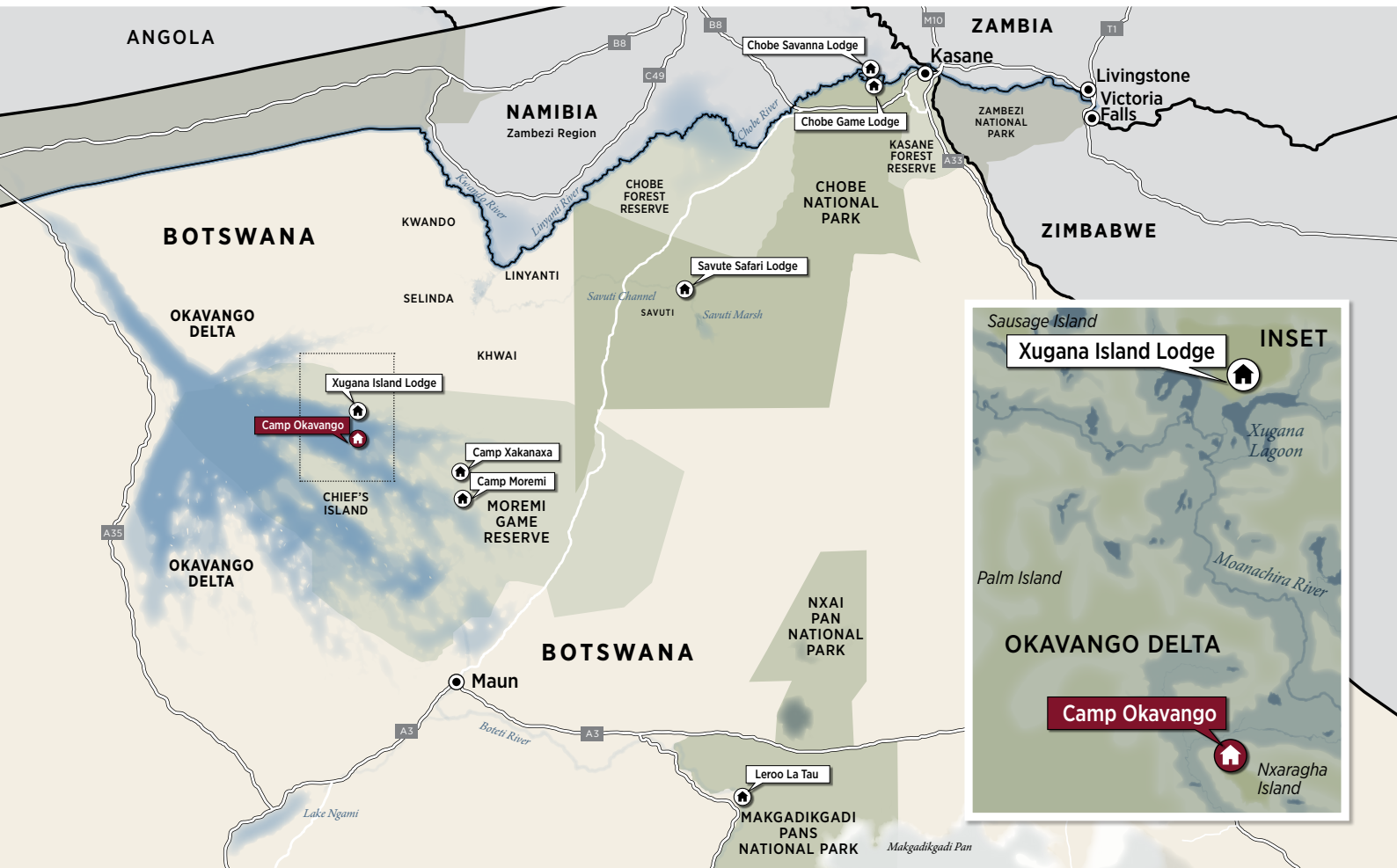


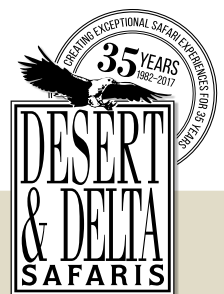


CAMP OKAVANGO

Nxaragha Island, Okavango Delta



Camp Okavango is a unique, exclusive and eco-sensitive African safari camp situated on the remote Nxaragha Island. A hidden treasure, in the heart of the permanent Okavango Delta, assures its guests of an unparalleled year-round water wilderness experience.



The Best Safari Circuit in **BOTSWANA**



THE CAMP

Hidden amongst beautiful ancient mangosteen trees, the main area comprises a network of interconnected walkways and decks linking two lounge areas, a dining room, library and self service bar.



CAMP FACILITIES

ROOMS	11 Suites and 1 Family Suite (2 en-suite bedrooms) accommodating a maximum of 24 guests.
PILOT/GUIDE	1 x Pilot/Guide Tent (not same standard as guest rooms).
RATES	Fully inclusive of all meals, scheduled safari activities, local drinks (including alcoholic drinks, excluding premium brands) and park entrance fees.
DINING	Various indoor and outdoor dining locations.
CAMP FIRE	Located on a large deck overlooking the delta floodplains.
SWIMMING POOL	On a separate deck with easy access from the main area.
VIEWING DECK	Separate raised viewing deck overlooking the Okavango Delta floodplains.
BAR	Fully stocked self service bar.
CURIO SHOP	Accepts cash and credit card payments.
LAUNDRY	Daily, inclusive laundry service available.
WATER	Reverse osmosis water treatment plant supplies drinking water (bottled water on request).
ELECTRICITY	24-hour power supplied by solar plant, backed up by generator. 220V AC plug's in guest rooms.
INTERNET	Guest laptop available with basic internet connection in the library - there is no Wi-Fi available.
TELEPHONE	No telephone communication available. The lodge has a satellite phone & radio for emergencies.
CHILDREN	Children from 6 years and older. See Desert & Delta Safaris child policy for more information.





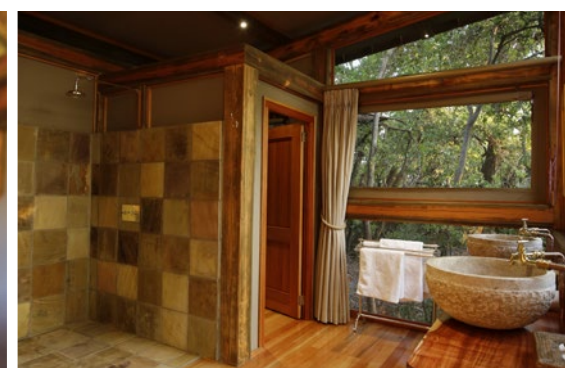
ACCOMMODATION

To ensure a peaceful and genuine safari experience, Camp Okavango accommodates just twenty-four guests. There are eleven intimate Safari suites and one Family suite consisting of two bedrooms and each with an en-suite bathroom.



ROOM FACILITIES






RAISED DECKS	Built on raised wooden platforms and connected by a wooden walk ways.
PRIVATE VIEWING DECK	Expansive private viewing decks overlooking the delta and natural vegetation.
EN-SUITE BATHROOM	Including his and hers shower, double basin and separate toilet.
FANS	Fans are available in all rooms - there is no air-conditioning in the rooms.
POWER	220V multi adaptor plugs for charging photographic equipment.
SAFE	A small pass-code protected safe for storing valuables.
FLASHLIGHT	For use in the rooms at night.
UMBRELLA	In case of rain.
AIR HORN	For use in case of an emergency.
HAIRDRYER	A small hairdryer is available in each room.
BATHROOM AMENITIES	A range of bathroom amenities including biodegradable soaps, shower gels etc.
TEA & COFFEE FACILITIES	A small kettle with tea and coffee available.





ACTIVITIES

Due to its location in the heart of the Okavango Delta, Camp Okavango offers a range of activities focused on exploring the uniqueness of the Okavango Delta waterways and surrounding islands.

	MOTORISED BOAT SAFARIS	Guided excursions through the deeper channels and lagoons of the Okavango Delta in hard-bottom aluminum boats. The boats are equipped with comfortable seats, a foldaway canvas roof and life jackets.
	MOKORO (CANOE) EXCURSIONS	Guided mokoro excursions in traditional dug out canoes through the shallower channels and floodplains of the Okavango Delta.
	GUIDED BUSH WALKS	Bush walks on the surrounding islands for a chance to track the larger species that inhabit the water wilderness. Guided walks are conducted in small groups with two guides.
	FISHING	Optional fishing excursions to fish for bream (seasonal). All fishing equipment is available at the lodge.
	HELICOPTER FLIGHTS <i>(Optional Extra, surcharges apply)</i>	Scenic helicopter flights over the Okavango Delta are available from Camp Okavango at an additional charge.

TYPICAL DAY ON SAFARI

Please note the below suggested daily program is flexible based on the guests interests, travel times and availability of activities.

WINTER TIMES	SUMMER TIMES	ACTIVITY
05:30	05:00	Early morning wake-up call.
06:00	05:30	Light continental breakfast served in the dining area.
06:30	06:00	Leave for morning activity, (approximately 3 - 4 hours).
11:30	11:00	Brunch is served at the dining area.
SIESTA TIME		Relax and enjoy the lodge facilities and surroundings.
15:00	15:30	Afternoon tea is served on the open air patio.
15:30	16:00	Depart for afternoon activity (approximately 3 hours).
18:30	19:00	Arrive back at the lodge.
19:30	20:00	Dinner is served at the dining area.





ACCESS TO CAMP OKAVANGO

Camp Okavango is accessed by light aircraft transfer. The airstrip is serviced by Safari Air, a Chobe Holdings Company. Flights to and from Camp Okavango are scheduled based on the travellers itinerary. Once at the airstrip, it is a short 5 minute walk to Camp Okavango.

AIRSTRIP DETAILS

STRIP GPS CO-ORDINATES	S19° 07' 42.0 E023° 05' 54.0
CAMP GPS CO-ORDINATES	S19° 08' 05.04 E023° 06' 00.86
LENGTH	1000m
LICENSE	CAAB Licensed Class B airstrip accommodating aircraft up to MAUW 5700kg's (Cessna Caravan).
PRIVATE CHARTERS	Prior consent from Desert & Delta Safaris is required before landing private aircraft on the airstrip.



Maun

ESTIMATED FLIGHT TIMES Between Camps & Airports

25	Camp Okavango					
30	5	Xugana Island Lodge				
20	10	10	Camp Moremi / Camp Xakanaxa			
40	30	25	25	Savute Safari Lodge		
30	45	45	40	50	Leroo La Tau	
70	60	60	55	30	65	Kasane



RESERVATIONS OFFICE

TELEPHONE (+27) 11 394 3873
E-MAIL info@desertdelta.com

MARKETING OFFICE

TELEPHONE (+267) 6861559
E-MAIL marketing@desertdelta.com
ADDRESS Private Bag 310,
Maun, Botswana
WEBSITE www.desertdelta.com

▶ View Desert & Delta Safaris Video

The Best Safari Circuit in **BOTSWANA**

f t i www.desertdelta.com

CHobe GAME LODGE | SAVUTE SAFARI LODGE | CHobe SAVANNA LODGE | CAMP OKAVANGO | XUGANA ISLAND LODGE | CAMP MOREMI | CAMP XAKANAXA | LEROO LA TAU